

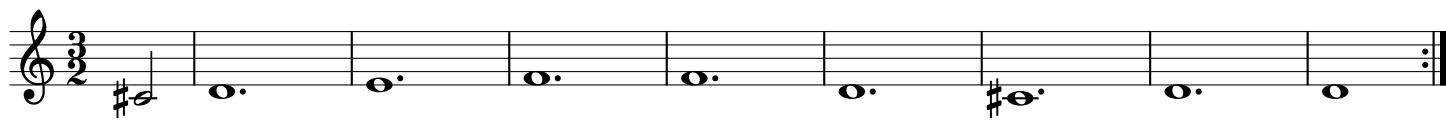
Tarantella Simple Guidelines - Modo Hypodorico

The image displays a musical score for a piece titled "Tarantella Simple Guidelines - Modo Hypodorico". The score is written in 3/2 time and consists of four staves. The first three staves are in treble clef, and the fourth staff is in bass clef. The key signature is one sharp (F#), and the mode is Hypodoric. The melody is composed of quarter and half notes, with a final double bar line and repeat sign. The notes in the four staves are: Staff 1: C4, D4, E4, F#4, G4, A4, B4, C5, B4, A4, G4, F#4, E4, D4, C4. Staff 2: C#4, D4, E4, F#4, G4, A4, B4, C#5, B4, A4, G4, F#4, E4, D4, C4. Staff 3: C4, D4, E4, F#4, G4, A4, B4, C5, B4, A4, G4, F#4, E4, D4, C4. Staff 4: C4, D4, E4, F#4, G4, A4, B4, C5, B4, A4, G4, F#4, E4, D4, C4.

Guidelines Tarantella Simple Guidelines - Modo Hypodorico



Guidelines Tarantella Simple Guidelines - Modo Hypodorico



Guidelines Tarantella Simple Guidelines - Modo Hypodorico



Bass Tarantella Simple Guidelines - Modo Hypodorico

