

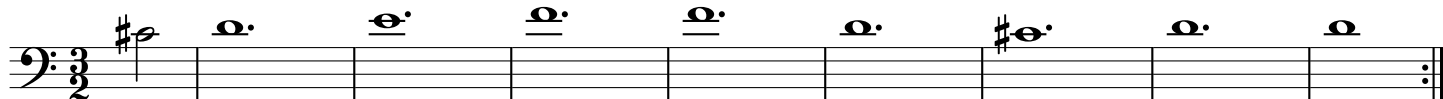
# Tarantella Simple Guidelines - Modo Hypodorico

The image displays a musical score for a piece titled "Tarantella Simple Guidelines - Modo Hypodorico". The score is written in bass clef with a 3/2 time signature. It consists of four staves of music, all of which are part of a single melodic line. The first staff begins with a treble clef and a key signature of one sharp (F#), and is marked with an '8' above the staff. The melody is composed of eighth notes and quarter notes, with some notes underlined. The second staff starts with a sharp sign (#) before the first note. The third and fourth staves continue the melodic line. The piece concludes with a double bar line and repeat dots.

# Guidelines Tarantella Simple Guidelines - Modo Hypodorico



# Guidelines Tarantella Simple Guidelines - Modo Hypodorico



# Guidelines Tarantella Simple Guidelines - Modo Hypodorico

